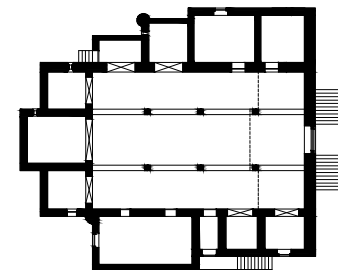
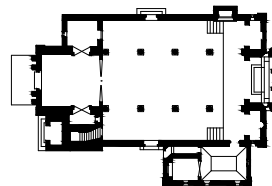
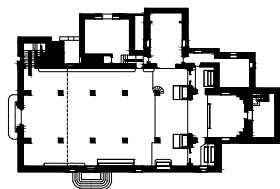
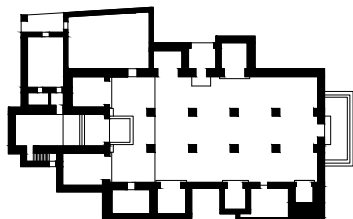
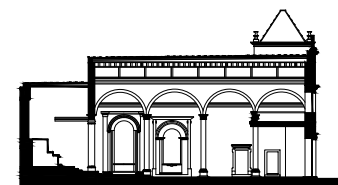
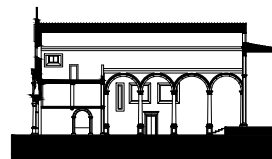
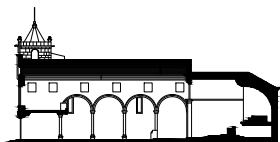
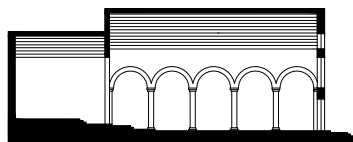


IGREJAS RENASCENTISTAS DE TRÊS NAVES COM COBERTURA EM MADEIRA

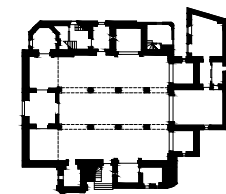
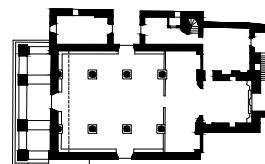
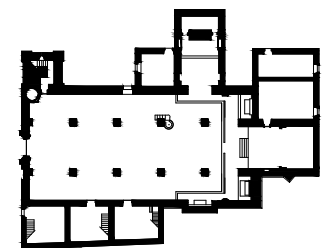
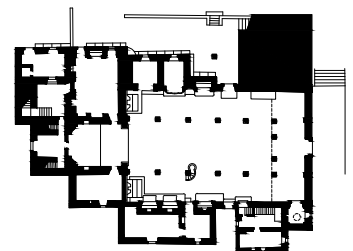
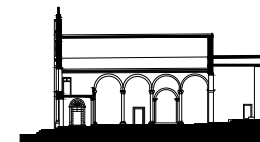
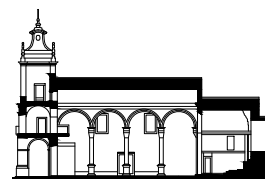
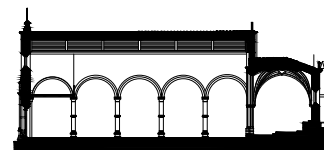
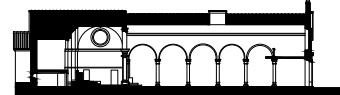


IGREJA DE SÃO PEDRO, CANTANHEDE

IGREJA MATRIZ DE ARRUDA DOS VINHOS

IGREJA DE SANTA MARIA DE ÓBIDOS

IGREJA DE SANTA EUFÉMIA, PENELA



IGREJA DE SÃO PEDRO, TORRES VEDRAS

IGREJA DE SÃO QUINTINO, SOBRAL DE MONTE AGRAÇO

IGREJA MATRIZ DA MERCEANA, ALENQUER

IGREJA DE SÃO SEBASTIÃO, PENELA